



LEONARDO ELECTRONICS

Capabilities: Integrated Support Solutions



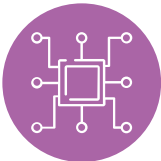
ABOUT US

Leonardo Electronics US, Inc. is a leading American provider of advanced electronic solutions. With facilities located across the nation, we develop cutting-edge products and capabilities for a diverse range of sectors. From supporting critical defense and commercial applications globally to enabling our nation’s most sensitive government programs, our commitment to innovation and excellence drives everything we do.

ONE-STOP SOLUTION

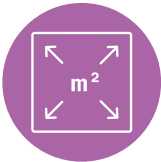
This includes production, service, and maintenance to reduce out-of-service.
ISO and AS 9100/9110 Certified (USA).

CORE CAPABILITIES



ISO CLASS 8 AND CLASS 7 CLEANROOMS (5,000 SQ. FT.)

Multiple Interlock Firing Rooms
Optical Bonding
Optical Inspection
Helium Leak Testing
ISO Class 6 Pods



PRODUCTION AREA (5,000 SQ. FT.)

4 Thermal Chambers
3 Axis Vibration
J-Std Soldering
IPC 610



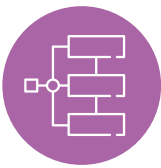
SUPPLY CHAIN MANAGEMENT (SCMS)/LOGISTICS

Subcontract Management
International Import/Export Operations and Compliance
Logistics Support and Management



MAINTENANCE, REPAIR, AND OPERATIONS (MRO) AND PRODUCTION

Laser Target Designator (LTD) Component Level Repair
Laser Range Receiver (LRR) Production and Repair
Infrared Countermeasure Repair
Multi-mode Active Electronically Scanned Array (AESA) Radar Repair
Production & Repair of Survivability Hardware
Field Support Repair
Trained staff to IPC-J-STD-001, IPC-7711/21, IPC-A-610, and IPC/WHMA-A-620 standards



SYSTEM/SOFTWARE ENGINEERING

Mil Std 498 and DO-178C DAL C development processes
Future Airborne Capabilities Environment (FACE) software integration
Software Development Capabilities

- Platform customization with open-source architecture to meet US market needs, cyber resilience, and field update requirements.
- ARINC 653 Multi-Core Development
- DOORS requirements management
- Rhapsody Model-Based Development in C/C++
- Visual Studio Software Development in C++, C#
- VxWorks (Intel and NXP processors), Windows, Linux Redhat/CentOS, Ubuntu Operating Systems development
- Team Foundation Server for Agile development with Git source control
- Python scripting/Artificial Intelligence (AI) and Machine Learning (ML) capabilities with sci-kit, NumPy, pandas, PyTorch libraries

Field Testing

- Support High-Level Verification and Validation tests at the Customer’s site

System/Software Integration Lab (SIL)

- Systems and Software Engineering Support
- Demonstration and Training Area
- Two mirrored aircraft ASE Environments
- Windows-based emulators for ASE Sensor systems
- Windows-based emulator for Apache Aircraft Mission processor
- Aircraft and ASE 1553 Bus with aircraft representative hardware
- Enables testing Software Builds
- Demonstration area includes 4 flat panel screens



For more information:
HSVinfo@Leonardo.us

Leonardo Electronics US Inc.
5025 Bradford Dr NW, Suite 100
Huntsville, Alabama, 35805, USA
T (256) 705 0910

This publication is issued to provide outline information only and is supplied without liability for errors or omissions. No part of it may be reproduced or used unless authorised in writing. We reserve the right to modify or revise all or part of this document without notice.

LDO_UK25_01361
July 2025 © Leonardo

