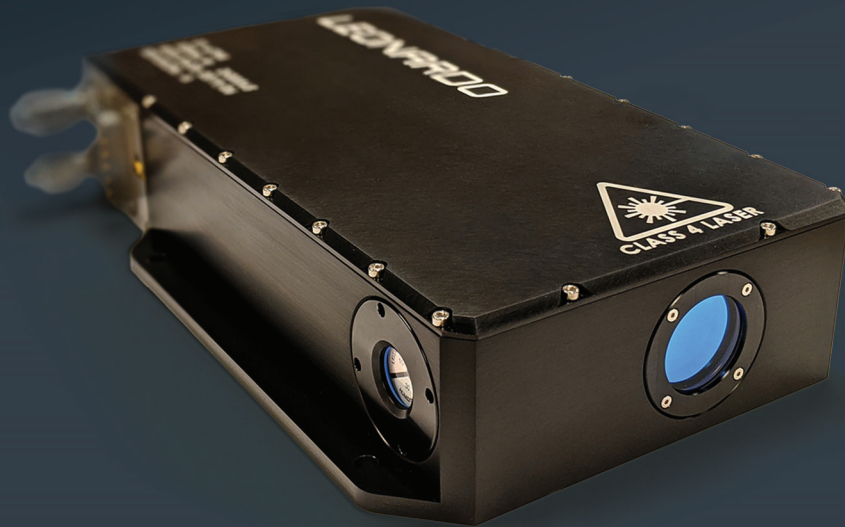


TARGET ILLUMINATION LASER SOURCE (CW)



Leonardo's 1550 nm laser illuminator product line pairs our high-power laser diode sources with our advanced beam shaping and conditioning optics. Targeting Illumination Lasers (TIL) are necessary for Directed Energy Systems to facilitate the identification and tracking of potential threats such as rockets, artillery, and missiles (C-RAM) and unmanned aerial systems (C-UAS). Direct diode sources offer size, weight, and performance advantages over competing fiber laser-based solutions.

KEY FEATURES

- SWIR CW Source
- Homogenized output beam
- Low size and weight
- Direct diode efficiency

KEY BENEFITS

- Compact solution for target illumination
- Ease of integration
- Solid state reliability

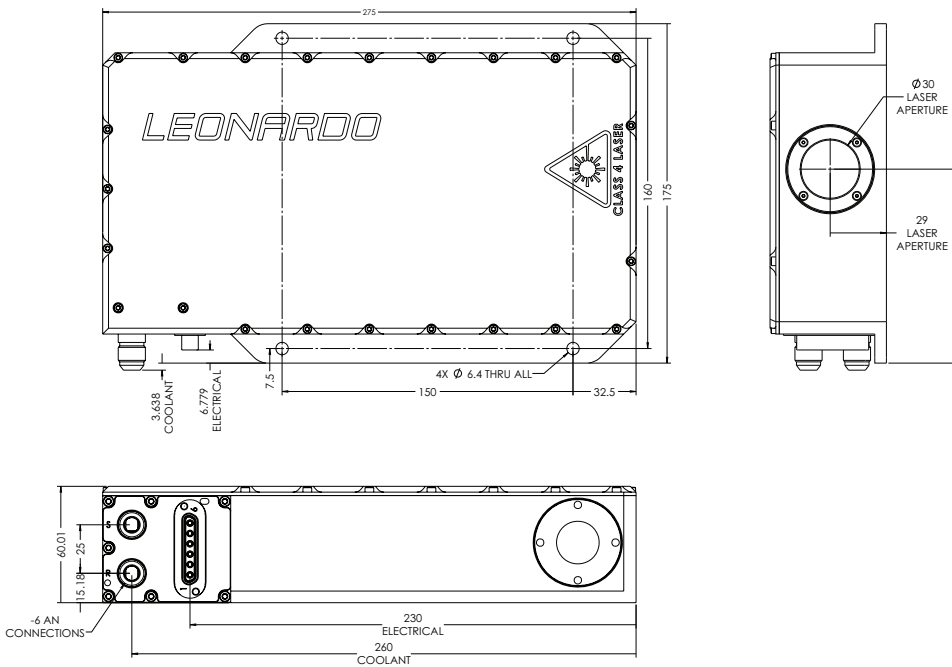
TYPICAL ILLUMINATOR SPECIFICATIONS (HIGH POWER CW)

Parameters	Units	Typical Value
Wavelength	nm	1550
Power Output	W	500
Spectral Width	nm	<12
Beam Uniformity ¹ (Peak to Valley Variation)	%	+/-7.5
Beam Size at Output Window	mm • mm	14 x 14
Beam Divergence	mrاد	18 x 35
Dimensions	mm	275 x 160 x 60
Coolant		EGW 60/40
Flow Rate	lpm	12
Coolant Temperature	°C	15
Pressure Drop	psi	34

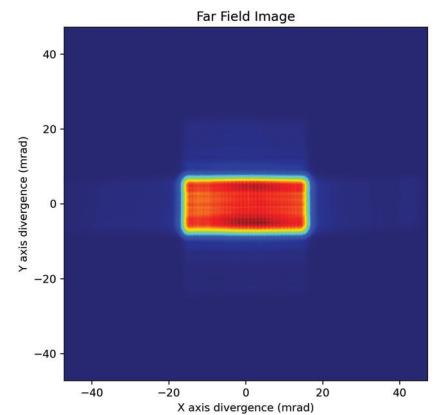
Notes:

¹With homogenizer

MECHANICAL SPECIFICATIONS



FAR FIELD BEAM PROFILE



Leonardo Electronics US Inc.
 7775 N. Casa Grande Highway
 Tucson, AZ - 85743 - USA
 520 744 5700
 sales@leonardo.us

LDO_LEI24_00629 11-24



leonardo.us

