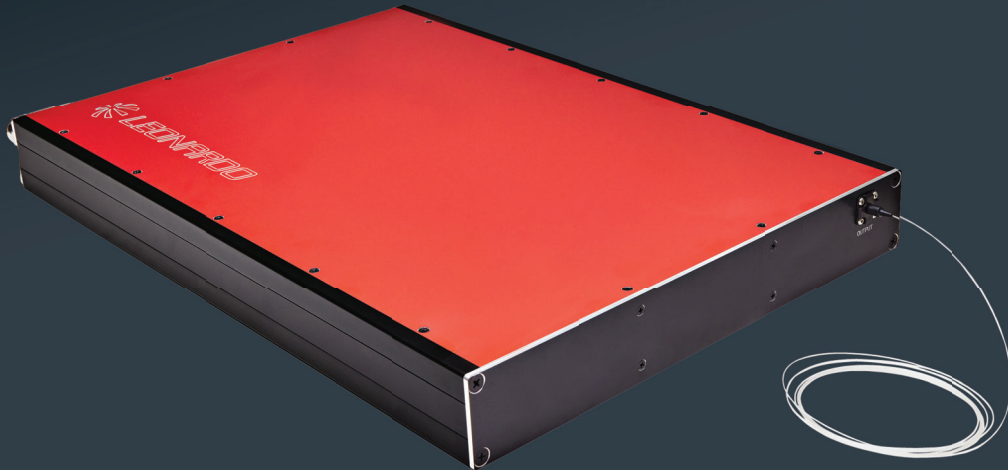


HIGH-POWER FIBER LASERS AND AMPLIFIERS

L40 & A40



Leonardo's fiber amplifier is the core building block for fiber laser systems. Leveraging Leonardo's fully integrated US-based manufacturing line, our products are engineered to reliably deliver world-class performance.

KEY FEATURES

- Industrially and military rugged
- Configurations available for spectral or coherent beam combination
- Low size and weight
- Long operating lifetime
- Integrated electronics and controls
- Easy to use interface

KEY BENEFITS

- Narrow linewidth
- Single mode fiber output with typical M^2 of 1.1
- CW operation with 2.5 kW output power
- Tunable output power

KEY APPLICATIONS

- Directed Energy
- Defense
- Industrial
- Beam Combining – Spectral and Coherent
- Power Beaming
- Sensing

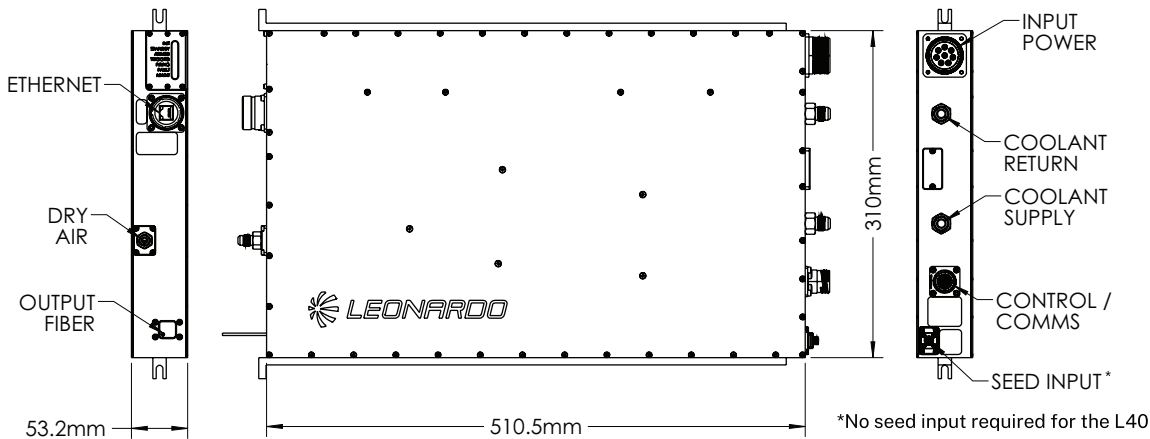
TYPICAL FIBER AMPLIFICATION SPECIFICATIONS

Product Type	Fiber Amplifier		Fiber Laser
		A40	L40
Parameters (at 20°C)	Units	Typical Value	Typical Value
Optical			
CW Input Signal	mW	15	NA
Input Signal Polarization		Random or Depolarized*	NA
CW Maximum Output Power	W	2500	
Power Stability	%	±2	
Input Signal Wavelength Range	nm	1050 - 1080	
Input Signal Linewidth (3dB)	GHz	25	NA
Output Signal Linewidth (3dB)	GHz	25	
Electrical-Optical Efficiency	%	>30	
Beam Quality (M ²)		1.1	
Mechanical			
Package Mass (dry)	kg	13	
Package Dimensions, L x H x W	mm	510.5 x 310 x 53.2	
Delivery Fiber Length	m	1	
Coating Diameter	µm	550	
Clad Diameter	µm	400	
Core Diameter	µm	25	
Input Specifications			
Voltage (DC)	VDC	270	
Maximum Current	A	28	
Communication		RS232/485	
Cooling Type		Filtered Water/PGW	

*Linear polarization available

Leonardo prioritizes ongoing product development and strives for constant improvement. We reserve the right to modify specifications without prior notice.

MECHANICAL SPECIFICATIONS



Leonardo Electronics US Inc.
7775 N. Casa Grande Highway
Tucson, AZ - 85743 - USA
520 744 5700
sales@leonardo.us



LDO_LEI24_00626 10-24



leonardo.us

