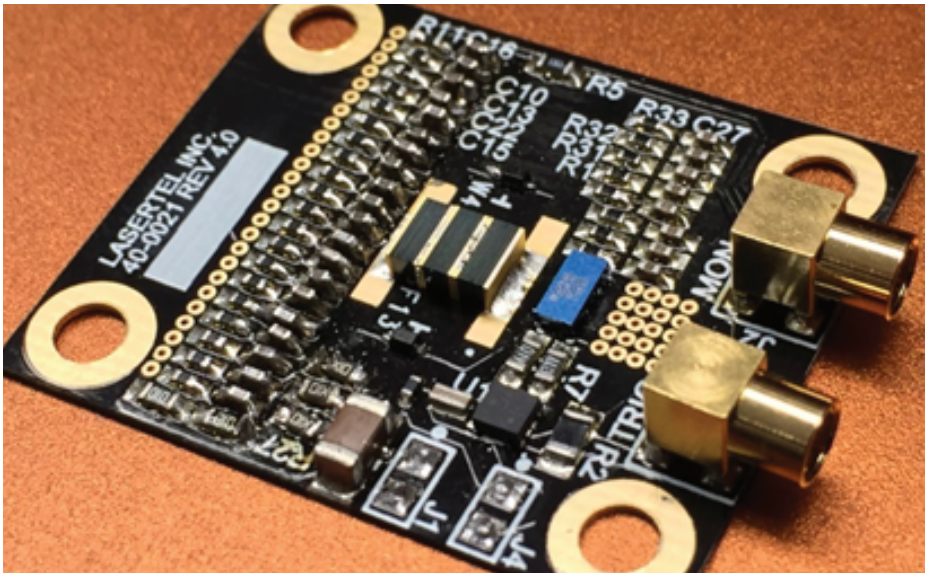


Lidar Illuminator Module



Lasertel's Lidar illuminator module is a high-powered laser diode array integrated onto an OEM driver board. The module is designed specifically to achieve the high peak-powers and very short pulse-widths required for Lidar imaging applications.

KEY FEATURES:

- Laser diode and driver in a single assembly
- Narrow pulse-widths (2 to 10 ns, adjustable)
- Ultra-high peak-power (0 to 1250 W, adjustable)
- Small footprint (7.7 cm²)
- Option for integrated heat sink for high duty cycles
- Eye-safe wavelengths available

APPLICATIONS:

- Lidar (automotive, military, aerospace, commercial)
- 3D scanning and machine vision
- Time-of-flight cameras and surveillance



Lasertel products proudly made in the USA
P: +1 877.844.1444 E: SALES@LASERTEL.COM

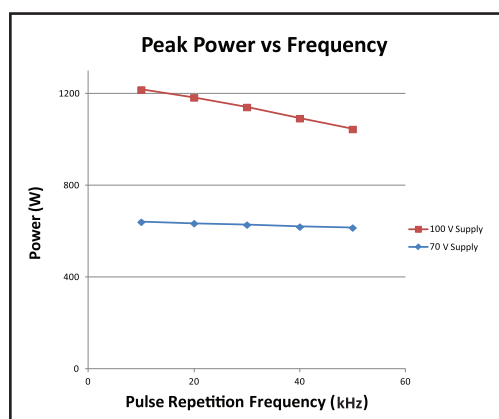
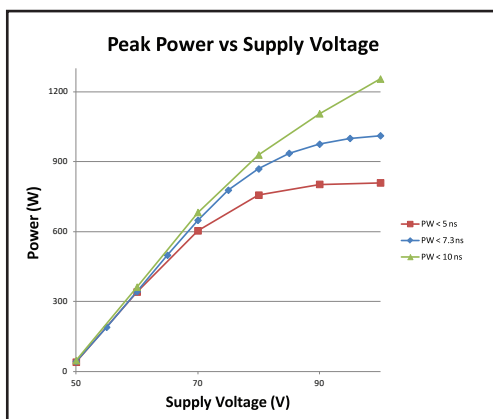
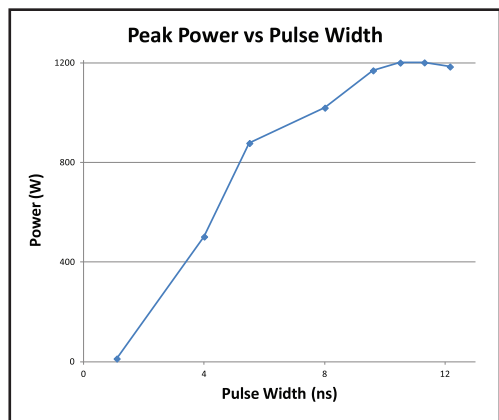
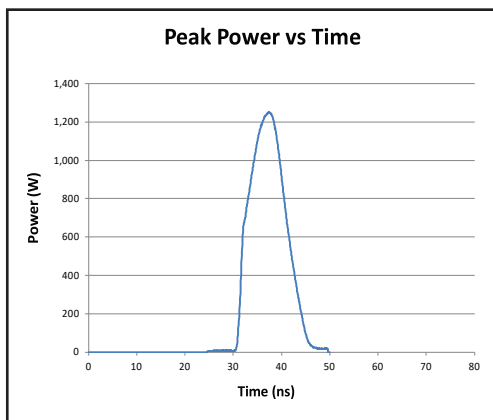
ABSOLUTE MAXIMUM RATINGS:

| Parameter | Unit | Rating |
|----------------------------------|------|------------|
| Operating Temperature | °C | -40 to +65 |
| Storage Temperature | °C | -40 to +85 |
| Pulse Repetition Frequency (PRF) | kHz | 100 |
| Trigger Input Voltage | V | 4 to 6 |
| Logic Power Input Voltage | V | 4 to 6 |
| Supply Power Input Voltage | V | 100 |

SPECIFICATIONS:

Temperature = 25 °C, Supply Voltage = 100 V, Pulse-Width = 9.4 ns, Repetition Frequency = 10 kHz

| Parameter | Unit | Min | Typical | Max |
|-----------------------------|---------|----------|---------|------|
| Peak Optical Output Power | W | | | 1250 |
| Spectral Width (FWHM) | nm | 3 | 5 | 10 |
| Peak Current | A | | 45 | |
| Current Monitor Sensitivity | mV/A | | 25 | |
| Available Wavelengths | nm | 760-1100 | | |
| Fast-Axis Divergence (FWHM) | degrees | | 30 | 32 |
| Slow-Axis Divergence (FWHM) | degrees | | 12 | 15 |
| Energy Per Pulse | µJ | | | 11 |



Patent Numbers: US 7,660,335 | US 7,864,825 | US 6,352,873 | US 6,295,307

P: +1 877.844.1444 E: SALES@LASERTEL.COM W: LASERTEL.COM